

# PortfolioVue™ Product Overview

## See Further. Deliver Smarter.

**PortfolioVue is predictive intelligence software purpose-built for Professional Services firms, PMO consultants, and SMBs who manage complex project portfolios.**

Instead of reactive reporting that tells you what *already happened*, PortfolioVue uses proprietary AI-powered predictive analytics to alert you 2-3 weeks *before* issues impact delivery—giving you time to actually fix problems instead of just explaining them.

### The Bottom Line:

PortfolioVue answers the questions your current tools can't:

- "Are we going to finish on time?" (not just "Are we on schedule today?")
- "Are we going to be over budget?" (not just "What did we spend so far?")
- "Who will be overloaded next month?" (not just "Who's busy today?")
- "Which vendor is going to hold us up?" (not just "Which vendor missed a deadline?")
- "What's likely to break in the next 2-3 weeks?" (not just "What broke yesterday?")

# The Problem We Solve

## Many Companies Have Lots of Data But No Clear Answers

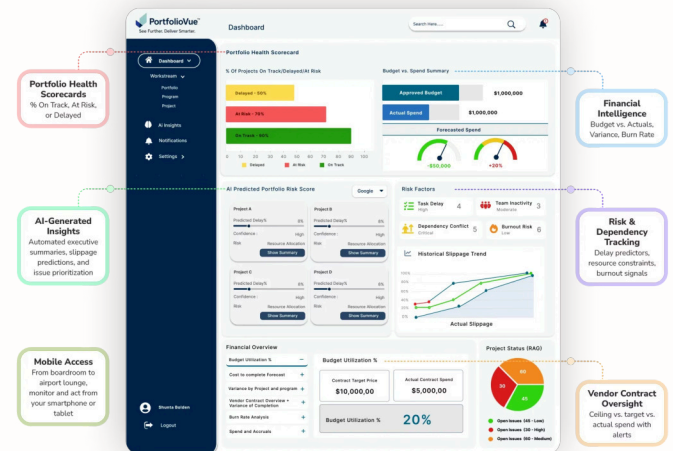
### The Current State:



### You likely have:

- Many different project tools
- Lots of dashboards and reports
- Long weekly meetings
- Manual spreadsheets

### With PortfolioVue:



### But you still can't confidently answer:

- When will this project really finish?
- Which projects are in trouble?
- Who is overloaded?
- What should I focus on today?

The real problem isn't having too little data—it's not knowing what to do with it.



#### The Data Deluge

You have lots of data from various project tools, dashboards, and manual spreadsheets.



#### No Clear Answers

Despite the data, you struggle to answer critical questions about project timelines, risks, and resource allocation.



#### Predictive Insight

Your tools show you what's happening. **PortfolioVue predicts what will happen,** giving you time to fix problems proactively.

# Core Features



## Smart Project Predictions

AI predicts project problems 2-3 weeks ahead, reducing delays by 60-70% and boosting on-time completion by 30-40%.



## Dashboards for Everyone

Personalized dashboards for every role, providing insights into project health, resource allocation, and individual tasks.



## Team Workload & Planning

Smart tools balance workloads, reducing overloaded teams by 85% and improving efficiency by 15-25%.



## Vendor & Partner Insights

Tracks vendor performance, with early warnings that reduce delays by 60% and improve relationships.



## Budget & Money Insights

Financial analysis spots budget problems early, cutting overruns by 70% and finding issues 2-3 weeks sooner.



## Easy Connection to Your Systems

Integrates smoothly with existing tools via secure, real-time links, with custom connection options.

## Tools for Company Goals

Connects daily work to bigger company goals, tracking OKRs/KPIs and prioritizing projects.

## Auto Insights & Alerts

Important information delivered when needed, reducing status meetings by 80% and enabling proactive management.